

# COMPANY PROFILE

Tecomak was established in 1975 to serve both Industrial and Educational establishments, by providing maintenance of environmental aspects such as fume cupboards and extraction systems.

From our original beginnings as a test and maintenance company, we have used the experience gained over the years to expand our business to include the design and installation of our own range of fume cupboards and laboratory furniture to meet the ever changing needs of our clients.

During 1996 Tecomak split its operations to form two separate companies:

- Tecomak TLS – specializing in the supply and installation of fume cupboards and laboratory furniture.
- Tecomak Environmental Services – concentrating on the test and maintenance of all clean air devices.

This restructuring has enabled us to concentrate on the individual operations in more detail and so to increase the range of products and services we offer.

Tecomak TLS has diversified by applying our experiences gained in laboratory refurbishments to a wider range of products and services, including;

- IT Suites
- Food Technology Rooms
- Reception Areas
- Project Management
- And much more...

Why not take a look and see how we can help you!

# PRODUCTS AND SERVICES

- **FURNITURE**

- Laboratories/Science
- Food Technology
- ITC Rooms
- Reception Areas
- Design Technology Rooms
- Staff Rooms
- Libraries
- General Class Rooms



- **ROOM REFURBISHMENTS**

- Decorating
- Flooring
- Ceilings
- Furniture
- Mechanical and Electrical Services
- Window Blinds
- Minor Building Works

- **PROJECT MANAGEMENT**

- **CAD DESIGN AND 3-D DESIGNS**

- **FUME CUPBOARDS**

- **DISABILITIES ALTERATIONS**



# FURNITURE

Tecomak began designing and installing laboratory furniture in 1975 for both Industrial and Educational establishments. We have since expanded into other areas; including:

- ITC Areas
- Reception Areas
- Food Technology Rooms
- Design Technology Rooms
- Libraries
- Teaching Rooms
- Staff Rooms
- And More!

Our furniture is made to the highest quality and to the following specification:

	STANDARD RANGE	OTHER AVAILABLE RANGES	AVAILABLE OPTIONS
<b>FURNITURE INCLUDING:</b> <ul style="list-style-type: none"> <li>- Under structure</li> <li>- Shelves</li> <li>- Drawer Units</li> <li>- Doors</li> <li>- Wall Units</li> </ul>	Our standard range is all made from 18mm Melamine faced particle board (MFC), faced with laminate sheet in 3 standard colours – grey, white or cream (see next page). All the exposed edges are lipped in 3mm tape – in a colour of your choice (see next page).	INCLUDE: <ul style="list-style-type: none"> <li>- MDF</li> <li>- Solid wood</li> <li>- Higher specification for Industrial Laboratories.</li> </ul>	INCLUDE: <ul style="list-style-type: none"> <li>- Cupboard locks</li> <li>- Label holders</li> <li>- Adjustable feet on the units</li> <li>- Wheels to make units portable.</li> <li>- And much more!</li> </ul>
<b>PLINTH:</b>	Fitted to the bottom of the carcass is 22mm thick Obeche hardboard, available in two colours – Black or Brown.		
<b>FURNITURE FIXTURES AND FITTINGS</b>	<ul style="list-style-type: none"> <li>- The standard handle fitted is the “D” style handle, although others are available.</li> <li>- All hinges fitted are a good 190 degrees.</li> <li>- All metal work is covered in epoxy powder coating to help maintain the quality.</li> </ul>	INCLUDE: <ul style="list-style-type: none"> <li>- A diverse range of handles.</li> </ul>	
<b>WORKTOPS</b>	Available in 3 ranges: <ul style="list-style-type: none"> <li>- Trespa – A solid grade laminate acid resisting material, for a modern look.</li> <li>- Iroko – A 27mm thick solid acid grade wood, for a more traditional look.</li> <li>- Corian – Is a mixture of plastic and granite, which can be shaped and moulded to perfection.</li> </ul>	INCLUDE: <ul style="list-style-type: none"> <li>- Woods including:                             <ul style="list-style-type: none"> <li>• Maple</li> <li>• Beech</li> <li>• Oak</li> </ul> </li> <li>- MDF worktop with laminate finish.</li> </ul>	INCLUDE: <ul style="list-style-type: none"> <li>- Vast range of colours available for both Trespa and Corian, see the next page for examples.</li> </ul>

(FOR A MORE DETAILED SPECIFICATION PLEASE ASK A MEMBER OF OUR SALES TEAM)

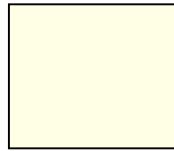


# FURNITURE COLOURS AND SAMPLES

## - Carcase:



GREY



CREAM



WHITE

## - Tape:



Light Grey



Grey



Golden Yellow



Ruby Red



Burgandy



Emerald Green



Water Blue



Light Moss Green



Sky Blue



Ultramarine Blue



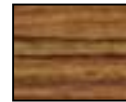
Sapphire Blue



Brown



Black



Beech\*



Oak\*

\* These colours are not available for handles.

## - Worktops:



TRESPA

Solid grade laminate acid resisting material with rounded edges for a smooth finish.



IROKO

Solid acid grade wood for a more traditional look. Worktops are constructed using 's' joints to get the desired width.



CORIAN

A mixture of plastic and granite which can be shaped and moulded.

(Due to limitations of printing and the nature of the manufacturing process, colours may vary from those shown)

# DESIGN AND BUILD PROJECTS

We understand that our clients are the best judges of what is needed in a functional room. We therefore strive to combine your vision and our knowledge to produce a design scheme that is workable and durable.

From an initial site survey we will work closely with you to produce a design that meets your criteria, in 3 stages:

**Stage 1: First Glance**



**Stage 2: Design Stage**



**Stage 3: Completion**



In our experience it is often difficult to visualise what a final design will look like from a two dimensional plan. We therefore use the latest design software to provide two dimensional plans showing the design specifications, as well as a range of 3D layouts to give you a clearer indication of what the final product will look like.



# LABORATORIES

Tecomak has specialised in designing and installing laboratory furniture for over 20 years, and are an ideal choice to help you with your laboratory requirements.

Here are just some of our most recent projects:



Whatever you are looking for from your laboratory, Tecomak will be able to help you achieve it. We will work with you until you are happy with what we have designed – after all it is you who will be using the laboratory.

# FOOD TECHNOLOGY ROOMS

The Tecomak range of furniture is ideal for the needs of Food Technology and our design team is sure to have a solution that will meet your requirements.

We have found from past experience that the Octagonal design is ideal for Food Technology as this layout tends to favour the more practical subject.

Here is an example of a Food Technology Room we have installed recently:



Whatever you wish to achieve in Food Technology, Tecomak is sure to have a design that will help you achieve this.

# IT ROOMS

Tecomak has designed a range of furniture that is ideal for Information Technology areas. When we design a room we look to make it as aesthetically pleasing as possible by ensuring any loose wires or cabling are hidden beneath the units. This minimizes the possibility that accidents may occur.

Here are just some of our designs:



Information Technology is fast becoming one of the key subjects in the curriculum. It is therefore essential that we create the right environment to teach from - Tecomak will work with you to achieve this.

# OTHER AREAS

## INCLUDING:



RECEPTION AREAS



STAFF ROOMS

We have also designed and installed other areas of furniture including some of the following:

- Libraries
- DT Rooms
- General Teaching Rooms

This is by no means an exhaustive list and we pride ourselves on being able to design for any eventuality. Why not contact us and see how we can help!

# FIXTURES AND FITTINGS

As part of our furniture packages we offer a vast range of ancillary items from the essentials such as:



Gas Fittings



Electrical Fittings



Water fixtures and fittings

To just about everything you could require to make your room functional:



Adjustable Furniture & Seating



Filing Cabinets



Storage Facilities

To name but a few, why not ask us and see how we can help!

# PROJECT MANAGEMENT AND ROOM REFURBISHMENT

More and more of our clients are seeing the advantages of dealing with one firm when refurbishing a room, and have subsequently asked us to not only design their room but to manage the project, and all the trades involved.

We can deal with any type of refurbishment package including, but not limited to, some of the following:

- Services – including Mechanical and Electrical services, to the necessary standards such as Corgi and NIECC.
- Decoration
- Ceiling – including installing new suspended ceiling grids and lighting
- Flooring
- Blinds
- Windows
- Air conditioning units
- Extraction systems
- Minor Building works
- And more!!

By having one company managing your project you can direct your energies to making the overall choices and leaving the daily tasks in the hands of the professionals.

Here is an example of a laboratory carried out during 2004, where Tecomak was responsible for the whole package:

Turning this:



Into This:



## **FUME CUPBOARDS**

*For the best and most reliable range of fume cupboards look no further than Tecomak!*



# THE EDUFLO 5 FUME CUPBOARD

The Eduflo 5 fume cupboard range has been specially designed for use in teaching laboratories and preparation rooms.



## FEATURES:

- Near 100% glass panelled area allowing demonstrations to be seen more easily by students.
- The specially designed rear baffle draws air at a faster rate over the work surface dealing with heavy fume more effectively.

## SPECIFICATIONS:

The cabinet is formed from patent slim-line aluminium section. The panels and front fascia are fabricated from mild steel sheet and for additional protection, electrically coated with zinc. All metal parts are finished in epoxy powder coat.

Safety glass is fitted throughout, with the front sash supported on counterweights and stainless steel cables. A sash safety lock is fitted to prevent the sash being raised above 400mm. A coin operated lock release is incorporated to enable the sash to be raised for setting up equipment and cleaning.

Sash stops to a height of 50mm are fitted to prevent the sash glass from trapping limbs in the unlikely event that the sash system fails.

The standard cabinet has a work surface fabricated in solid core laminate with an anti-spill strip of epoxy powder coated aluminium. As an alternative, an epoxy work surface is also available.

## SERVICES:

The front controlled gas and water service have outlets set in the work surface, with panel valve

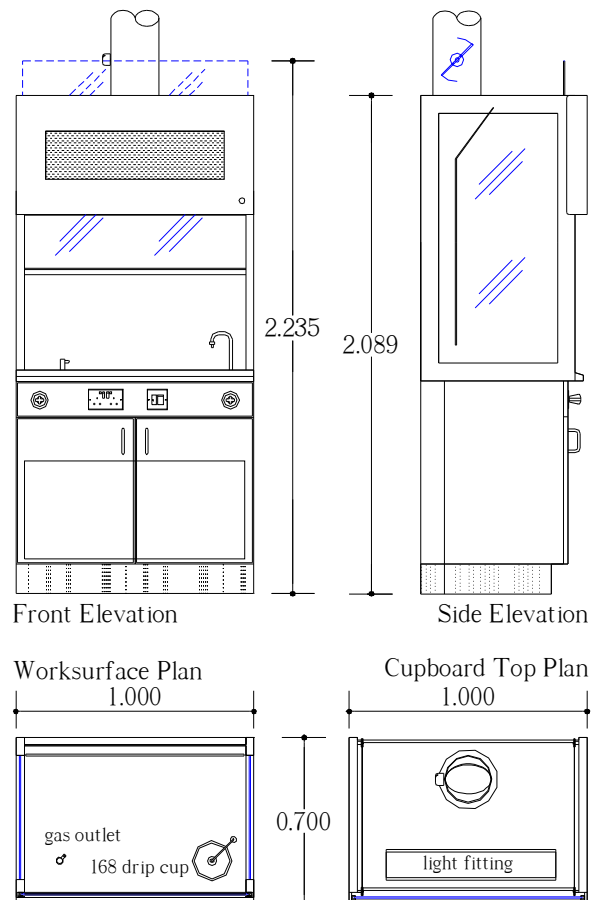
front controls mounted in the service rail to the under structure. They consist of the following:

- 1 control valve for cold water
- 1 bench mounted water outlet
- 1 control valve for gas
- 1 bench mounted gas outlet
- 1 168mm dia. Vulcathene drip cup
- 1 13A 2-gang switch socket outlet with neon indicators
- 1 fluorescent light fitting with spur switch

A sink and cover can be substituted for the drip cup. Sinks are made from white epoxy resin. The sink cover, if requested, minimises loss of work surface and is provided with a combined drip/finger hole.

## FINISH:

All metal components and leg frames are finished in white epoxy powder coat, unless otherwise specified.



For more detailed specification please ask our sales team.

# THE EDUFLO 5 MOBILE FUME CUPBOARD

The Eduflo 5 Mobile fume cupboard is designed to offer greater visibility as a demonstration fume cupboard, allowing students to clearly view the experiment from all sides while allowing the lecturer sole access to the sash side, and so improving safety.



## FEATURES:

- Four-sided glass panelling allows demonstrations to be seen from all sides of the cabinet.
- The cupboard can be turned and parked against the wall when not in use as a teaching aid where it can be used as a normal fume cupboard.

## SPECIFICATIONS:

The cabinet is formed from a patent slim-line section. The panels and front fascia are fabricated from mild steel sheet and for additional protection, electrically coated with zinc. The system is mounted on a tubular table frame with castors, two of which are fitted with foot operated brake assemblies. The all-metal frame is finished in epoxy powder coat.

All glazed panels and the rear baffle are in safety glass. The front sash is supported on counterweights and stainless steel cables. A safety sash lock is fitted to prevent the sash being raised above 400mm. A coin operated lock release is incorporated to enable the sash to be raised for setting up equipment and cleaning.

Sash stops to a height of 50mm are fitted to prevent the sash glass from trapping limbs in the unlikely event that the sash system fails.

The standard cabinet has a work surface fabricated in solid core laminate with an anti-spill strip of epoxy powder coated aluminium. As an alternative, an epoxy work surface is also available.

## SERVICES:

The front controlled gas and water services have outlets in the work surface, with panel valve front

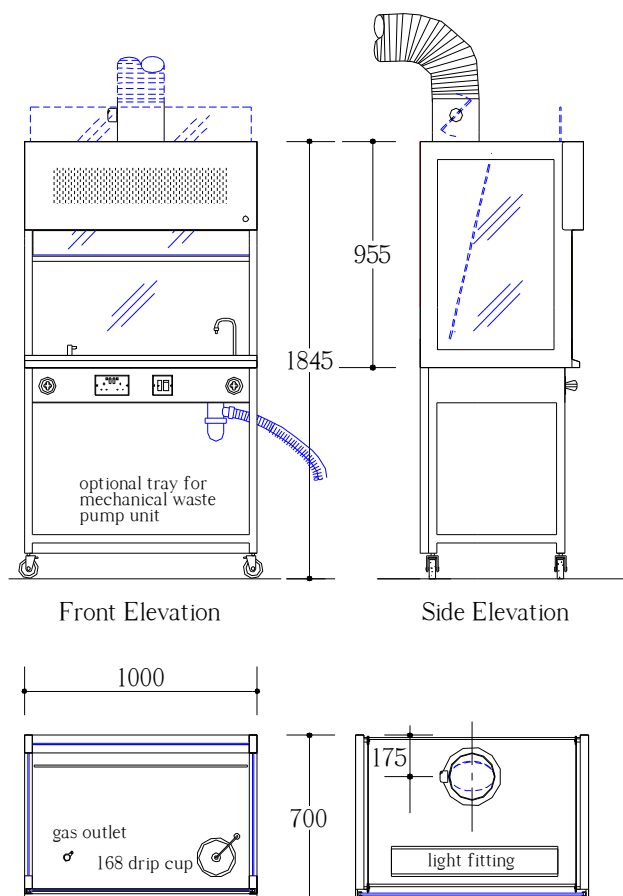
controls mounted in the service rail of the under structure. They consist of the following:

- 1 control valve for water
- 1 bench mounted water outlet
- 1 control valve for gas
- 1 bench mounted gas outlet
- 1 168mm dia. Vulcathene drip cup
- 1 13A 2 gang switch socket outlet with neon indicators
- 1 fluorescent light fitting with spur switch

The pipe work and electrical services are taken through two metre lengths of flexible hosing, to service connections. Retaining straps are fitted to prevent accidental damage of the flexible hoses. A sink and cover can be substituted for the drip cup. Sinks are made from white epoxy resin. The sink cover, if requested, minimises loss of work surface and is provided with a combined drip/finger hole. The final connection for the extraction system is made via a three-metre length of 200mm dia. flexible PVC duct.

## FINISH:

All metal components and leg frames are finished in white epoxy Powder coat, unless otherwise specified.



For more detailed specification please contact a member of our sales team.



# THE ETCHFLO FUME CUPBOARD

The Etchflo fume cupboard was designed to improve the safety of etching. The entire process, from the preparation of the solutions to the washing of the etched plate can be carried out in the safety of the cabinet.



## FEATURES:

- The design of the cabinet is based on the fact that it is preferable to remove fumes at source rather than depend on increasing the air changes in the print room.
- The need to carry etched plates dripping in acidic solution across the print room to the sink for washing is avoided and the risk of injury is substantially reduced.

## SPECIFICATIONS:

The cabinet and extract system is fabricated in acid resistant PVC with the minimum of metal components.

The cabinet can be supported on either under cupboards or on a metal leg frame finished in white epoxy powder coat.

Vertical, double section folding doors are fitted to provide security when the chamber is not in use. Similar single section doors can be provided as an alternative however this will reduce the opening area. A baffle, fitted to the rear face of the chamber guides the airflows across the top of the dish, thereby increasing the efficiency with which fumes are drawn into the extract system and considerably reduces the volume of harmful fumes entering the room atmosphere.

## SERVICES:

The front controlled water service has an outlet set in the work surface, with panel valve front

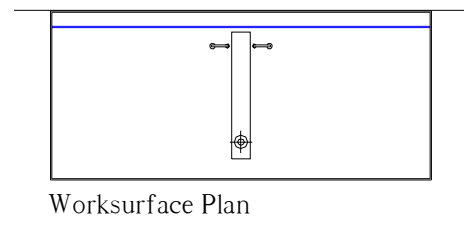
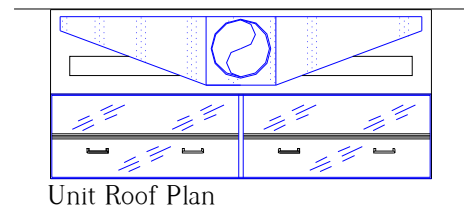
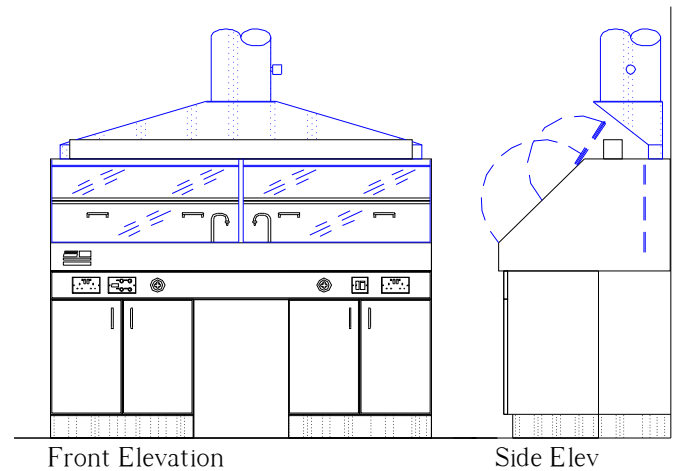
controls mounted in the service rail of the under structure. They consist of the following:

- 1 control valve for cold water
- 1 bench mounted water outlet
- 1 waste trough
- 1 fluorescent light fitting with spur switch

The work surface takes the form of a shallow sink, which serves both to contain spillages and to allow washing of the plate to take place. Secondary, deeper sinks may also be incorporated if required.

## FINISH:

All metal components and leg frames are finished in white epoxy powder coat, unless otherwise specified.



Length	Depth	Height
1000	900	500
1220	900	600
1500	900	600
2000	900	600
3000	900	600
3500	900	600

For a more detailed specification please contact a member of our sales team.



# ASTEC RECIRCULATING FUME CUPBOARDS

We also supply recirculating fume cupboards from the Astec range.

Re-circulating fume cupboards are an alternative to fixed, ducted units as they reuse the bad air through the use of a carbon filter at the point of contamination.

## EDU 96 UNIT



### **SPECIFICATIONS:**

- Mobile from laboratory to laboratory
- Airflow meets the requirements of Design Note 29: Fume Cupboards in Schools
- Specially formulated filter suitable for GCSE and 'A' Level curriculum
- Optional gas, water and waste services
- Easy Installation – no ducting required
- Optional acid breakthrough detector

## MONAIRE UNIT



### **SPECIFICATIONS:**

- Audio/visual alarm to indicate low airflow or fan failure
- Filter inspection window
- Fully tested and fitted to BS 7989:2001 for recirculatory filtration fume cupboards
- Sash designed to provide constant, safe airflow velocities

For information on the full Astec range please contact a member of our sales team.

# INTRODUCING...



Providing a friendly, professional service to research laboratories, industry, education and the Health Service

If you have a containment control requirement, whether of operator, environmental or product protection we aim to deliver the best solution for you.

We are a small client focussed company, dedicated to the improvement of workspaces, providing engineered products and high quality, cost effective service.

Please feel free to contact us, whether to discuss your requirements or simply for some free impartial advice.

Let your problem become our solution...

## PRODUCTS



Industrial fume cupboards



Ventilation & Extract Systems



Local Exhaust Ventilation



Educational Fume Cupboards – TLS

## SERVICES



Cleanroom Validation



Clean Air Cabinet Services



Fume cupboard Maintenance



Air Filter Management

Tecomak Environmental Service  
Unit 3B Valley Industries  
Hadlow Road, Tonbridge  
Kent, YN11 0AH  
Tel: 01732 852250 Fax: 01732 852251  
[www.tecomak.com](http://www.tecomak.com)  
[sales@tecomak.com](mailto:sales@tecomak.com)



Tecomak Laboratory Services  
Unit 3B Valley Industries  
Hadlow Road, Tonbridge  
Kent, TN11 0AH  
Tel: 01732 852250 Fax: 01732 852251  
[www.tecomak.com](http://www.tecomak.com)  
[sales@tecomak.com](mailto:sales@tecomak.com)

